

# AC LED Street & Security Light



## 01 Features

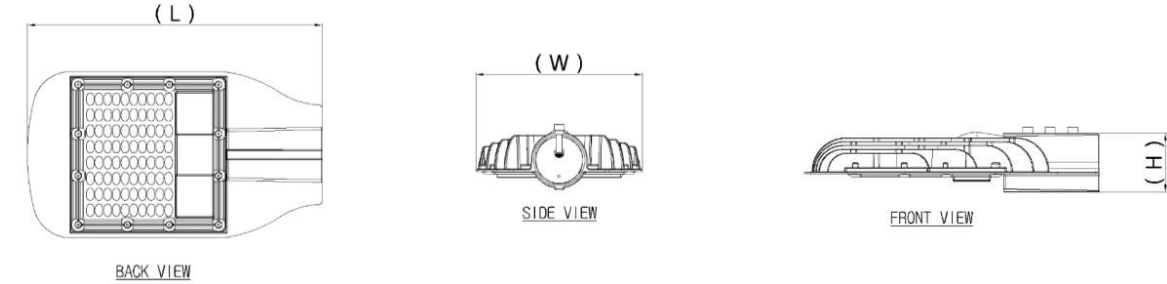


- Direct AC LED Module
- No SMPS
- Various voltages (110, 220, 277 Vac)
- High efficiency (min. 120 lm/W ~)
- To be small size & light, Easy to install
- Save Electricity bill due to long life
- Power Factor  $\geq 98\%$
- Apply Surge Protection Device
- Option : Dimming (MCU, Photosensor, 1-10V)

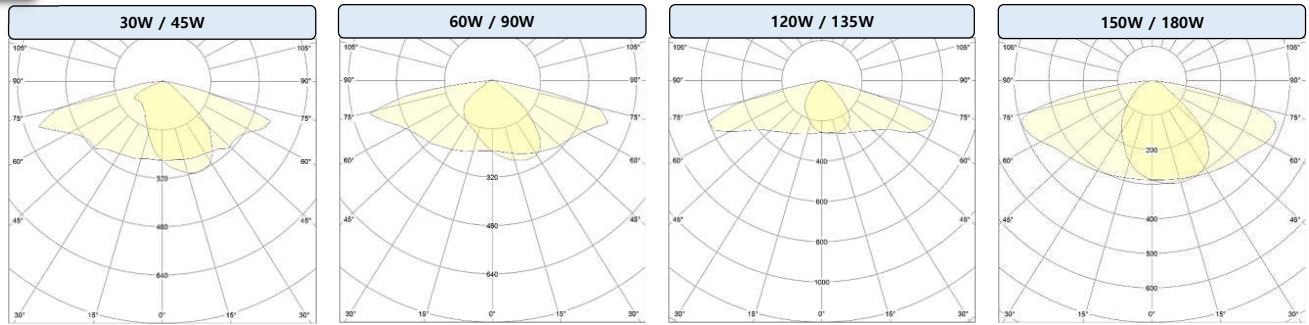
## 02 Product specifications

Model	SD-30-2.0N	SD-45-2.0N	SD-60-2.0N	SD-90-2.0N	SD-120-2.0N	SD-135-2.0N	SD-150-2.0N	SD-180-2.0N
Power consumption	30 W	45 W	60 W	90 W	120 W	135 W	150 W	180 W
Input voltage	110 / 220 / 277 Vac							
Light Efficiency	Typ. 125 lm/W	Typ. 120 lm/W	Typ. 125 lm/W	Typ. 120 lm/W	Typ. 120 lm/W	Typ. 125 lm/W	Typ. 140 lm/W	Typ. 140 lm/W
CRI	Ra 75 ↑							
CCT	5,000 K							
Weight	1.3 kg	1.3 kg	2.1 kg	2.1 kg	2.5 kg	2.5 kg	4 kg	4 kg
IP code	66							
SPD	20 kA ( I <sub>max</sub> )							
Light distribution type	Type II	Type II	Type II	Type II	Type II	Type II	Type II	Type II
Size (L x W x H mm)	290 x 185 x 75.5		390 x 220 x 78.5		430 x 270 x 79.5		480 x 330 x 87.4	
Certification	CE, PSE	CE, PSE	CE, PSE	CE, PSE	CE, PSE	CE, PSE	CE, PSE	CE, PSE

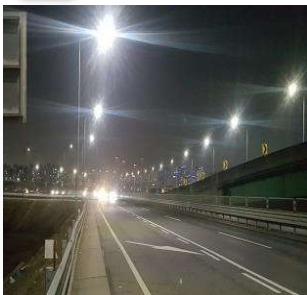
**03 Dimension**



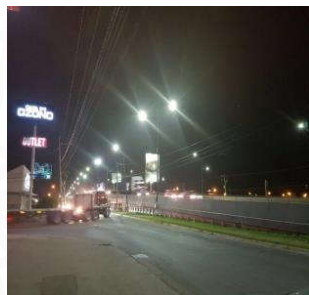
**04 Light distribution curve**



**05 Reference**



Republic of Korea



Mexico



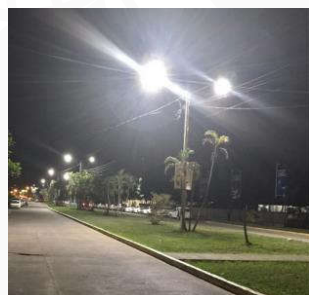
USA



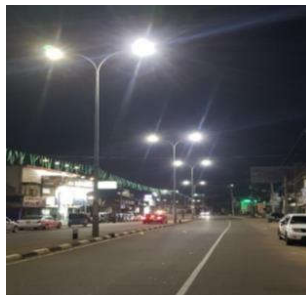
Republic of South Africa



Malaysia



Vietnam



Sri Lanka



Indonesia



**VIoT Technology Joint Stock Company**

33 Hoang Dieu St., Ward 10, Phu Nhuan District, Ho Chi Minh City, Viet Nam

**Tel: +84 93333 27 27**

sales@viotgroup.com | www.viotgroup.com

---